



**TURBO<sup>TM</sup>**  
**SCAFFOLDING**

**T LITE ALUMINIUM  
SCAFFOLDING**

**Compatible with Steel Kwikstage scaffolding \***

[www.turboscaffolding.com.au](http://www.turboscaffolding.com.au)

\*limitations apply



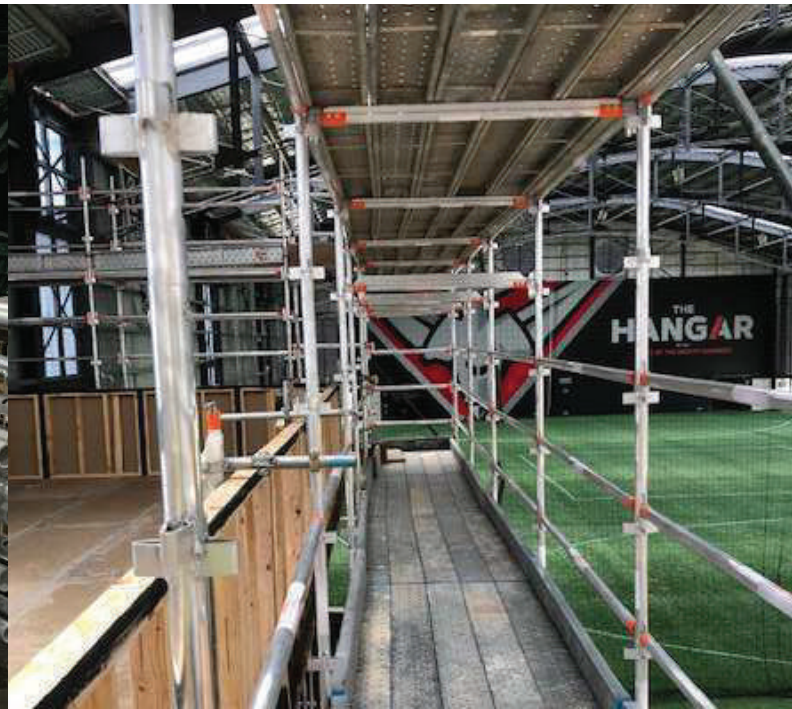
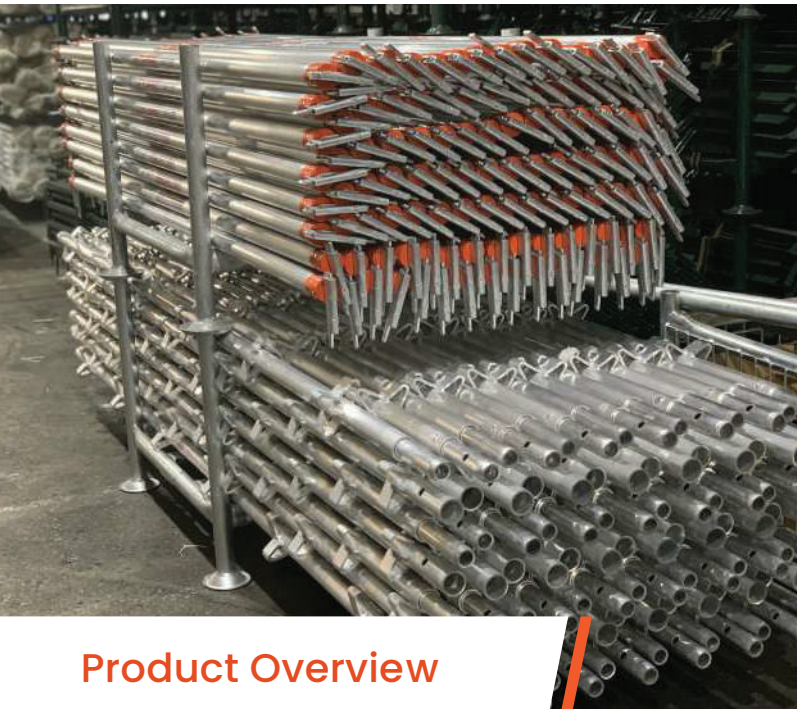
**TURBO**™  
**SCAFFOLDING**

Bringing structures to life



**T LITE ALUMINIUM SCAFFOLDING**

# T LITE System The original system access scaffolding solution



## Product Overview

### Faster – more than 50% lighter than steel

- High degree of standardisation and modular components
- System designed light weight to increase the speed of erection and dismantling

### Easier

- Eliminates the use of loose fittings
- Gravity fed wedges reduces human error and simplifies erection and dismantling
- Comprehensive range of accessories
- Can easily fit to various layout and height and compatible with steel Kiwkstage Scaffolding

## Applications

- General purpose and inspection light or heavy duty access
- Perimeter scaffold
- Birdcage scaffold
- Roof edge protection
- Static towers
- Mobile towers
- Stairway towers
- Building across roof
- Quick erection for short term hire





## Features & Benefits

### No loose fittings

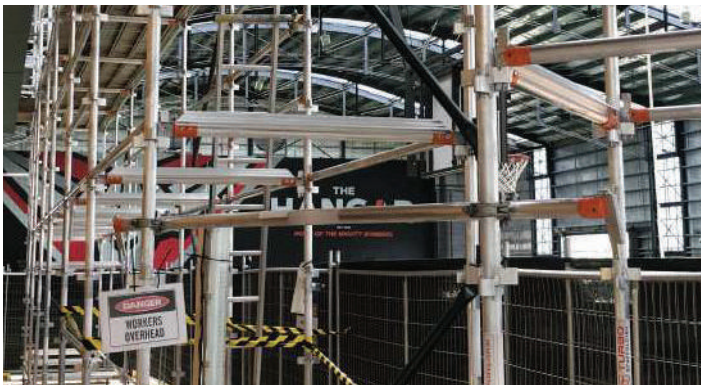
Captive connector means reduced losses and increased productivity compared to traditional tube and fitting scaffold.

### Adaptability

T Lite System will allow the user to follow most building profiles by just using the basic components and combining with steel scaffolding for continuous flow of bays.

### Quick and easy to erect Due to LIGHT WEIGHT

Ledgers and transoms are fixed to the vertical standards using captive wedge connections, eliminating the need for transverse bracing. All Joints are self locating. They have been designed for use by unskilled labour, keeping erection times and costs to a minimum. This ensures stringent safety levels can be easily achieved.





## A comprehensive range of accessories

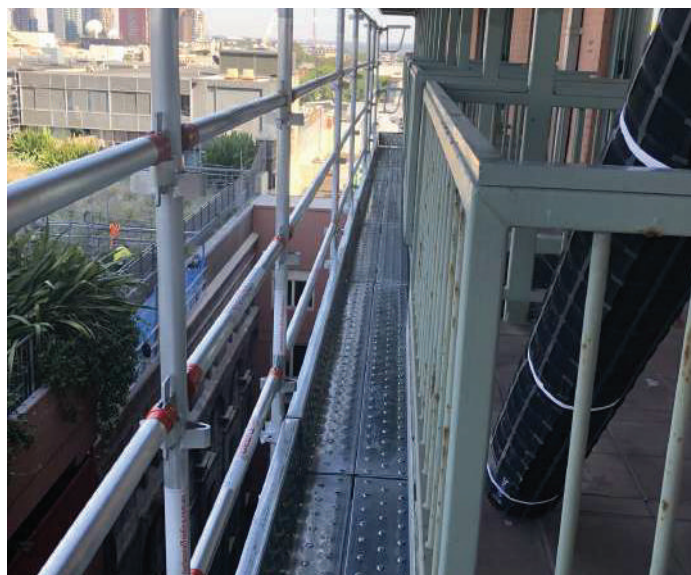
A wide range of accessories includes handrails, board stagebrackets, staircase towers, providing safe and secure access systems for all your requirements.

## Simple to maintain

All connections are made with steel wedge fixings which are very simple to use leading to a longer product life and minimum maintenance costs.

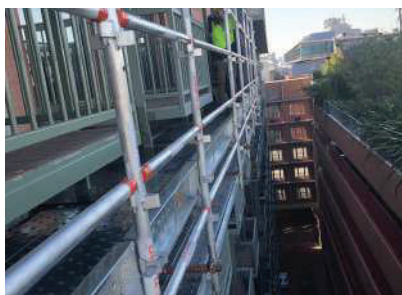
## Maximum safety

All coupling joints are made with steel pressings which give maximum safety.



## In Detail

### High loading capability



Fast safe working access to most heights for any operation. T Lite System's high load capability is suitable for all trades, from masons (high load) to painters (low load).

### Adjustable to suit site conditions



T Lite System is an incredibly versatile access solution. Whatever the height or however the sloping ground may be, the infinite adjustment of this system will overcome any problem.

# Components

## T Lite Scaffold Main Products



### Standards

Size	Weight	Size	Weight
3.0m	7.15 kg	1.5m	3.90 kg
2.5m	6.05 kg	1.0m	2.80 kg
2.0m	4.95 kg	0.5m	1.7 kg



### Ledgers

Size	Weight	Size	Weight
3.0m	6.30 kg	1.2m	3.32 kg
2.4m	4.58 kg	0.7m	2.77 kg
1.8m	3.92 kg		

### Braces

Size	Weight	Size	Weight
3.6m	7.1 kg	2.0m	3.8 kg
3.2m	6 kg	1.7m	3.4 kg
2.7m	5.3 kg		



### Transoms

Size	Weight	Size	Weight
2.4m	12.8 kg	0.7m	4.4 kg
1.8m	9.5 kg	0.5m	3.63 kg
1.2m	6.38 kg		

### Steel Plank

Size	Weight	Size	Weight
3.0m	19.50 kg	1.2m	8.1 kg
2.4m	14.1 kg	0.7m	5.2 kg
1.8m	11.6 kg		



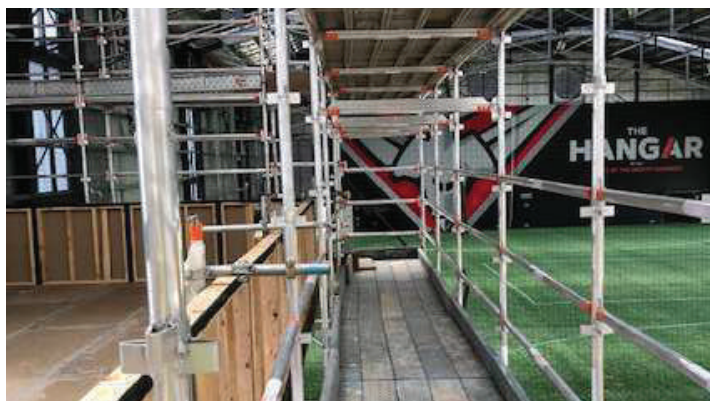
### 2 board hopup with spigot

Code	Weight
2TLBHBSP	6.2kg

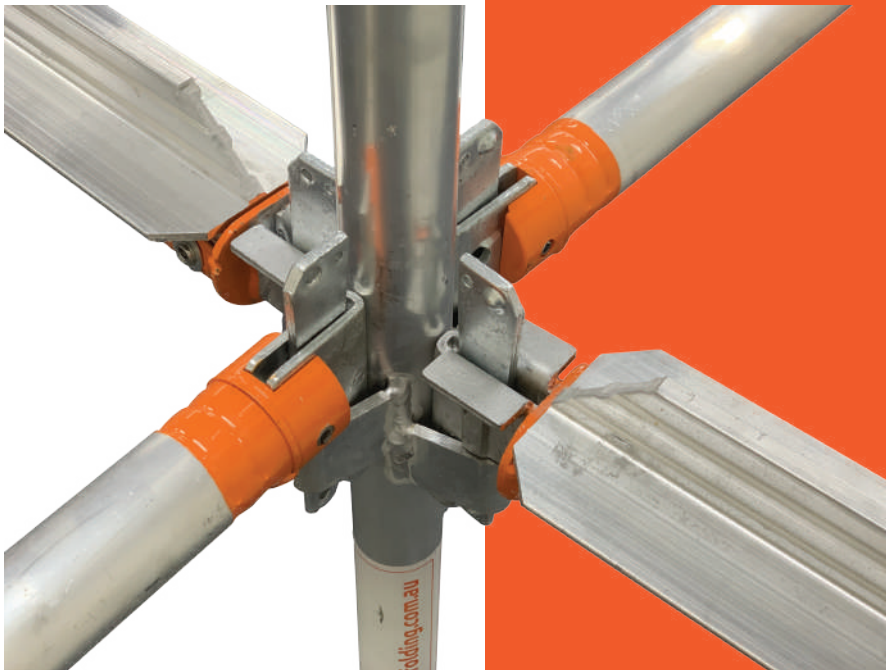


## Testing & Results

Scaffold Height	Description	Weight / bay
30 meter	2.4m bay with 2 x Medium Duty Scaffold	900kg/bay
32 meter	2.4m bay with 1 x Medium Duty Scaffold	675kg/bay
32 meter	2.4m bay with 2 x Medium Duty Scaffold	900kg/bay
34 meter	2.4m bay with 1 x Medium Duty Scaffold	675kg/bay
36 meter	2.4m bay with 1 x Medium Duty Scaffold	675kg/bay



- Few basic components
- Supplementary equipment
- Quick and easy to erect
- Maximum safety
- Light weight



  
**T-LITE**

 **TURBO**™  
SCAFFOLDING

**PHONE :**

Sydney: 02 9725 5233 | Melbourne: 03 9357 6388

Brisbane: 07 3034 1535 | Perth: 08 9410 0213

**VISIT :**

[www.turboscaffolding.com.au](http://www.turboscaffolding.com.au)